

# KAS<sup>®</sup>

*"Global quality for professionals"*

[kas.com.tr](http://kas.com.tr) | [f](#) [t](#) [i](#) /kasgrup



**PRODUCT CATALOGUE**

▶ Valve ▶ Manifold ▶ Flex ▶ PPR

# Quality Certificates





# Company Profile and History

**KAS** has started its activities with the production of brass made parts & fittings in 1970. The name **KAS** was registered as brand name in 1994. In the same year radiator valves & unions have been added to the product range. The **KAYALAR GROUP** began with the production of Corrugated Stainless-Steel Hoses in 2004 and is also manufacturing PPR Pipe & Fittings and faucets today.

**KAS** never gave up the target of continuous growth and maintains its activities. Today in a 35.000 m<sup>2</sup> facility with 22.000 m<sup>2</sup> indoor area where a professional team and an experienced R&D Department work on new products and improvements.

The Kayalar Group offers its customers more than 2.000 types and around 300 groups of products for natural gas and fire installations, connections, construction and industrial markets. The product quality is assured and certified according to standards like **CE, EN, TSE, TS, TSEK, GOST** and **ISO 9001**.

Our company has a production experience of more than 48 years and is capable to produce any products that are suitable with today's management and Change Management Techniques; thus, **KAS** has become the most trusted and quality brand in national and international markets. The quality, reliability, ergonomics and easy usage of its products determine the difference of **KAYALAR GROUP** against its competitors.

**KAYALAR GROUP** Company, cares about the client's by providing full support and by organising periodical educational meetings.

**KAYALAR GROUP** Company, shows interest not only for the business life but also for the social and educational life and supports social community services and educational associations for growing young brains.

The Kayalar Group currently exports to over 65 countries and serves many customers by providing full support and CRM techniques. Our target is to transform the **KAS** Brand into a global brand that is known for its product quality.

For more information, please visit our website.

[www.kas.com.tr](http://www.kas.com.tr)

   /kasgrup

Our natural  
resources are  
running out...

For our future,  
**We are aware of  
our responsibility...**

Energy saving is an  
important part of  
our future plans and  
R & D activities.

**KAS**

[kas.com.tr](http://kas.com.tr) | [f](#) [t](#) [i](#) /kasgrup



**We are all  
over the house...**

# Index



**Valve and Brass  
Fittings**

**08**



**Manifold and  
Underfloor Heating**

**24**



**Flex Groups**

**30**



**PPR Pipe and  
Fittings**

**52**

# Valve and Brass Fittings



## ► WATER AND NATURAL GAS INSTALLATION PRODUCTS



CE EN 331  
TSE

### ► Full Bore Brass Ball Valve For N.Gas Mob 5-20 Standart

PRODUCT CODE	SIZE	PCS/BOX	Pcs/Net Kgs
07.01.400	1/2	100	0,192
07.01.401	3/4"	80	0,280
07.01.402	1"	40	0,411
07.01.403	1 1/4"	20	0,673
07.01.404	1 1/2"	12	1,141
07.01.405	2"	8	1,390
07.03.401	3/4" - 1/2"	80	0,284



CE EN 331  
TSE

### ► Full Bore Brass Ball Valve For N.Gas Mob 5-20

PRODUCT CODE	SIZE	PCS/BOX	Pcs/Net Kgs
07.04.400	1/2"	100	0,186
07.04.401	3/4"	80	0,223
07.04.402	1"	40	0,416
07.04.403	1 1/4"	20	0,524
07.04.404	1 1/2"	12	0,869
07.04.405	2"	8	1,290



### ► Full Bore Brass Ball Valve For N.Gas PN 25

PRODUCT CODE	SIZE	PCS/BOX	Pcs/Net Kgs
08.09.430-01	1/2"	100	0,164
08.09.431-01	3/4"	80	0,224
08.09.432-01	1"	40	0,431
08.09.433-01	1 1/4"	20	0,574
08.09.434-01	1 1/2"	12	0,705
08.09.435-01	2"	8	1,105



EN 13547  
TSE

### ► Full Bore Brass Ball Valve For Water PN 40

PRODUCT CODE	SIZE	PCS/BOX	Pcs/Net Kgs
08.02.420	1/2"	100	0,194
08.02.421	3/4"	80	0,283
08.02.422	1"	40	0,451
08.02.423	1 1/4"	20	0,671
08.02.424	1 1/2"	12	1,148
08.02.425	2"	8	1,869
80.61.426	2 1/2"	4	2,725
80.61.427	3"	3	3,750
80.61.428	4"	2	6,175



EN 13828  
TSE

### ► Full Bore Brass Ball Valve For Water PN 25

PRODUCT CODE	SIZE	PCS/BOX	Pcs/Net Kgs
08.09.430	1/2"	100	0,164
08.09.431	3/4"	80	0,224
08.09.432	1"	40	0,431
08.09.433	1 1/4"	20	0,574
08.09.434	1 1/2"	12	0,705
08.09.435	2"	8	1,105



## ► WATER AND NATURAL GAS INSTALLATION PRODUCTS

### ► Full Bore Brass Ball Valve With Butterfly Handle - PN 40 - PN 25



PRODUCT CODE	SIZE	PCS/BOX	Pcs/Net Kgs
<b>PN 40</b>			
08.04.325	1/2"	100	0,176
08.04.326	3/4"	80	0,263
08.04.327	1"	40	0,442
<b>PN 25</b>			
08.04.430	1/2"	100	0,145
08.04.431	3/4"	80	0,206
08.04.432	1"	40	0,424

### ► Full Bore Brass Ball Valve With Butterfly Handle - PN 40 - PN 25



PRODUCT CODE	SIZE	PCS/BOX	Pcs/Net Kgs
<b>PN 40</b>			
08.03.325	1/2"	100	0,188
08.03.326	3/4"	80	0,275
08.03.327	1"	40	0,430
<b>PN 25</b>			
08.03.430	1/2"	100	0,157
08.03.431	3/4"	80	0,226
08.03.432	1"	40	0,410

### ► Full Bore Brass Ball Valve With Butterfly Handle - PN 40

**new product**



PRODUCT CODE	SIZE	PCS/BOX	Pcs/Net Kgs
08.03.530	1/2" M/F	100	0,105
08.03.531	3/4" M/F	80	0,175
08.03.532	1" M/F	40	0,312

### ► Full Bore Brass Ball Valve With Butterfly Handle - PN 40

**new product**



PRODUCT CODE	SIZE	PCS/BOX	Pcs/Net Kgs
08.04.530	1/2" F/F	100	0,105
08.04.531	3/4" F/F	80	0,175
08.04.532	1" F/F	40	0,307

### ► Ball Valve With Straight Handle PN 40

**new product**



PRODUCT CODE	SIZE	PCS/BOX	Pcs/Net Kgs
08.09.528	1/4" F/F	120	
08.09.529	3/8" F/F	120	
08.09.530	1/2" F/F	100	0,132
08.09.531	3/4" F/F	80	0,205
08.09.532	1" F/F	40	0,361

### ► Full Bore Brass Ball Valve For Water PN 25



PRODUCT CODE	SIZE	PCS/BOX	Pcs/Net Kgs
08.11.430	1/2"	100	0,145
08.11.431	3/4"	80	0,206
08.11.432	1"	40	0,424

## ► WATER AND NATURAL GAS INSTALLATION PRODUCTS



► **Full Bore Brass Ball Valve With Butterfly Handle With Union**

PRODUCT CODE	SIZE	PCS/BOX	Pcs/Net Kgs
08.06.327	1"	40	0,520



► **Full Bore Brass Ball Valve With Butterfly Handle With Sensor**

PRODUCT CODE	SIZE	PCS/BOX	Pcs/Net Kgs
08.07.327	1"	40	0,530



► **Full Bore Brass Ball Valve With Butterfly Handle With Union PN 40**

PRODUCT CODE	SIZE	PCS/BOX	Pcs/Net Kgs
08.05.325	1/2"	60	0,243
08.05.326	3/4"	50	0,366
08.08.327	1"	40	0,496
08.05.328	1 1/4"	20	0,815



► **Water Ball Valve With PPR Connection**



PRODUCT CODE	SIZE	PCS/BOX	Pcs/Net Kgs
08.09.730	20 mm		
08.09.731	25 mm	40	0,364
08.09.732	32 mm		



► **Full Bore Brass Ball Valve with Filter PN 40**

PRODUCT CODE	SIZE	PCS/BOX	Pcs/Net Kgs
08.08.448	1/2"	60	0,303
08.08.449	3/4"	50	0,437

## ► WATER AND NATURAL GAS INSTALLATION PRODUCTS

### ► Filter (Y - Strainer) PN 40 - PN 25



TSEK

PRODUCT CODE	SIZE	PCS/BOX	Pcs/Net Kgs
<b>PN 25</b>			
12.02.340	1/2"	150	0,100
12.02.341	3/4"	80	0,145
12.02.342	1"	50	0,238
<b>PN 40</b>			
12.01.340	1/2"	150	0,139
12.01.341	3/4"	80	0,214
12.01.342	1"	50	0,307
80.31.343	1 1/4"	30	0,391
80.31.344	1 1/2"	20	0,462
80.31.345	2"	10	1,265
80.31.346	2 1/2"	8	1,575
80.31.347	3"	6	2,350
80.31.348	4"	4	3,775



### ► Garden Bibcock With Straight Sleeve PN 25

PRODUCT CODE	SIZE	PCS/BOX	Pcs/Net Kgs
09.06.921	1/2"	50	0,215
09.03.922	3/4"	50	0,230



### ► Garden Bibcock With Butterfly Handle PN 25

PRODUCT CODE	SIZE	PCS/BOX	Pcs/Net Kgs
09.07.921	1/2"	50	0,197
09.04.922	3/4"	50	0,216



### ► Angle Ball Valve With Hose Connection PN 40

PRODUCT CODE	SIZE	PCS/BOX	Pcs/Net Kgs
10.01.370	3/4"	50	0,252

### ► Angle Ball Valve With Hose Connection PN 40

PRODUCT CODE	SIZE	PCS/BOX	Pcs/Net Kgs
10.01.371	3/4"	50	0,253

## ► WATER AND NATURAL GAS INSTALLATION PRODUCTS

### ► *Swing Check Valve*



PRODUCT CODE	SIZE	PCS/BOX	Pcs/Net Kgs
80.82.460	1/2"	100	0,155
80.82.461	3/4"	75	0,220
80.82.462	1"	50	0,293
80.82.463	1 1/4"	50	0,526
80.82.464	1 1/2"	40	0,573
80.82.465	2"	15	0,850
80.82.466	2 1/2"	10	1,370
80.82.467	3"	6	1,725
80.82.468	4"	2	3,675

### ► *Vertical Check Valve*



EN 12288

PRODUCT CODE	SIZE	PCS/BOX	Pcs/Net Kgs
80.81.470	1/2	100	0,123
80.81.471	3/4"	75	0,160
80.81.472	1"	50	0,218
80.81.473	1 1/4"	50	0,344
80.81.474	1 1/2"	40	0,445
80.81.475	2"	24	0,642
80.81.476	2 1/2"	12	0,944
80.81.477	3"	6	1,516

### ► *Gate Valve*



PRODUCT CODE	SIZE	PCS/BOX	Pcs/Net Kgs
11.01.850	1/2"	60	0,210
11.01.951	3/4"	40	0,252
11.01.852	1"	30	0,517

### ► *Stop Valve*



PRODUCT CODE	SIZE	PCS/BOX	Pcs/Net Kgs
11.02.850	1/2"	60	0,000
11.02.851	3/4"	40	0,238
11.02.852	1"	30	0,401

## ► WATER AND NATURAL GAS INSTALLATION PRODUCTS



### ► *Float with BS Connection*

PRODUCT CODE	SIZE	PCS/BOX	Pcs/Net Kgs
80.72.540	1/2"	50	0,338
80.72.541	3/4"	50	0,347
80.72.542	1"	50	0,396



### ► *Float*

PRODUCT CODE	SIZE	PCS/BOX	Pcs/Net Kgs
80.71.540	1/2"	50	0,271
80.71.541	3/4"	50	0,310
80.71.542	1"	50	0,360
80.71.543	1 1/4"	20	0,885
80.71.544	1 1/2"	20	0,923
80.71.545	2"	20	1,068



TSEK

### ► *Mini Brass Ball Valve*

PRODUCT CODE	SIZE	PCS/BOX	Pcs/Net Kgs
05.03.321	3/8"	250	0,062
05.03.322	1/2"	200	0,097
05.03.323	3/4"	120	0,143



### ► *Gas Filter*

PRODUCT CODE	SIZE	PCS/BOX	Pcs/Net Kgs
<b>Standart</b>			
80.32.820	1/2"	70	0,250
80.32.821	3/4"	70	0,215
<b>Economic</b>			
11.03.821	3/4"	70	0,198

## ► WATER AND NATURAL GAS INSTALLATION PRODUCTS

### ► Lengthening Fittings



PRODUCT CODE	SIZE	PCS/BOX	Pcs/Net Kgs
80.01.101	1 cm - 1/2"	500	0,029
80.01.102	1,5 cm - 1/2"	400	0,034
80.01.103	2 cm - 1/2"	300	0,046
80.01.104	2,5 cm - 1/2"	250	0,053
80.01.105	3 cm - 1/2"	200	0,060
80.01.106	4 cm - 1/2"	175	0,076
80.01.107	5 cm - 1/2"	150	0,093



### ► Lengthening Fittings

PRODUCT CODE	SIZE	PCS/BOX	Pcs/Net Kgs
80.04.160	Start 1/2 - 3/4"	250	0,052
80.04.175	Battery 3/4"	100	0,092
80.04.176	Battery Holed 3/4"	100	0,102
80.04.180	Washing Mach 1/2"	100	0,080
80.04.185	Y Type 3/4"	100	0,097

### ► Filtered Tap



PRODUCT CODE	SIZE	PCS/BOX	Pcs/Net Kgs
01.07.179	1/2" / 3/8" Filtered Valve for Lavatory	160	0,109
01.07.180	1/2" / 1/2" Filtered Valve for Lavatory	160	0,109
01.06.173	1/2" / 1/2" Tap for washing machine and dishwasher	100	0,126
01.05.173	1/2" / 1/2" Tap for washing machine and dishwasher	100	0,126

## ► WATER AND NATURAL GAS INSTALLATION PRODUCTS



178



177

### ► Interval Tap

PRODUCT CODE	SIZE	PCS/BOX	Pcs/Net Kgs
01.03.177	1/2" Polished Angle Valve for Lavatory (economic)	80	0,200
01.03.178	1/2" Venus Angle Valve for Lavatory	80	0,236



### ► Pressure Reducing Valve

PRODUCT CODE	SIZE	PCS/BOX	Pcs/Net Kgs
<b>Non Sealed</b>			
71.05.590	1/2"	8	0,315
71.05.591	3/4"	8	0,330
71.05.592	1"	12	0,870
71.05.593	1 1/4"	12	1,000
71.05.594	1 1/2"	12	1,060
71.05.595	2"	12	1,540
71.05.596	2 1/2"	1	3,050



### ► Safety Valve-Fixed Setting

PRODUCT CODE	SIZE	PCS/BOX	Pcs/Net Kgs
71.10.601	1/2"	20	0,090
71.10.611	3/4"	10	0185
71.10.612	1"	10	0,245

Please specify 3-4-6 or 8 bars in your orders.



### ► Safety Valve

PRODUCT CODE	SIZE	PCS/BOX	Pcs/Net Kgs
71.01.508	1/2"	250	0,075
71.01.509	1/2"	250	0,083

## ► WATER AND NATURAL GAS INSTALLATION PRODUCTS



### ► *Angle Radiator Valve*

**new product**

PRODUCT CODE	SIZE	PCS/BOX	Pcs/Net Kgs
04.14.307	1/2"	50	0,144
04.14.309	1/2" Pex-B	50	0,167



### ► *Angle Radiator Valve*

PRODUCT CODE	SIZE	PCS/BOX	Pcs/Net Kgs
<b>Non Sealed</b>			
04.01.303	1/2"	50	0,193
04.05.310	3/4"	50	0,243
<b>Sealed Type</b>			
04.08.303	1/2"	50	0,195
04.06.310	3/4"	50	0,250



### ► *Angle Radiator Valve (Eco)*

PRODUCT CODE	SIZE	PCS/BOX	Pcs/Net Kgs
04.01.307	1/2"	50	0,164



### ► *Straight Radiator Valve*

PRODUCT CODE	SIZE	PCS/BOX	Pcs/Net Kgs
<b>Non Sealed</b>			
04.02.301	1/2"	50	0,200
04.05.311	3/4"	50	0,242
04.04.301	1/2" Pex-B	50	0,200



### ► *Straight Radiator Valve - Sealed Type*

PRODUCT CODE	SIZE	PCS/BOX	Pcs/Net Kgs
<b>Sealed Type</b>			
04.08.301	1/2"	50	0,203
04.06.311	3/4"	50	0,266



## ► WATER AND NATURAL GAS INSTALLATION PRODUCTS



► *Angle Radiator Valve (Pex-B)*

PRODUCT CODE	SIZE	PCS/BOX	Pcs/Net Kgs
04.01.308	1/2" 16x2	50	0,205



► *Straight Radiator Valve Sealed Type (Pex-B)*

PRODUCT CODE	SIZE	PCS/BOX	Pcs/Net Kgs
04.08.308	1/2" 16x2	50	0,210



► *Radiator Valve Eco (Pex-B)*



PRODUCT CODE	SIZE	PCS/BOX	Pcs/Net Kgs
04.01.309	1/2" 16x2	50	0,176



► *Angle Radiator Valve For Copper Pipe Connection*

PRODUCT CODE	SIZE	PCS/BOX	Pcs/Net Kgs
04.01.304	1/2"	50	0,202

## ► WATER AND NATURAL GAS INSTALLATION PRODUCTS



**TSE**  
TS 579

### ► *Angle Radiator Valve (Towel Warmer)*

PRODUCT CODE	SIZE	PCS/BOX	Pcs/Net Kgs
04.07.303	1/2"	50	0,187



**TSE**  
TS 579

### ► *Angle Radiator Valve For Towel Warmer Sealed Type*

PRODUCT CODE	SIZE	PCS/BOX	Pcs/Net Kgs
04.09.303	1/2"	50	0,191



### ► *Angle Radiator Valve Pex-B (Towel Warmer)*

PRODUCT CODE	SIZE	PCS/BOX	Pcs/Net Kgs
04.07.308	1/2"	50	0,197



**TSE**  
TS 579

### ► *Angle Radiator Valve For Towel Warmer Sealed Type (Pex-B)*

PRODUCT CODE	SIZE	PCS/BOX	Pcs/Net Kgs
04.09.308	1/2"	50	0,200

## ► WATER AND NATURAL GAS INSTALLATION PRODUCTS



► *Angle Radiator Valve (KV3)*

**new  
product**

PRODUCT CODE	SIZE	PCS/BOX	Pcs/Net Kgs
04.11.303	1/2"	70	0,211



► *Angle Radiator Valve (KV3)*

**new  
product**

PRODUCT CODE	SIZE	PCS/BOX	Pcs/Net Kgs
04.11.308	1/2" Pex-B	70	0,218



► *Angle Radiator Valve (KV3)*

**new  
product**

PRODUCT CODE	SIZE	PCS/BOX	Pcs/Net Kgs
04.12.303	1/2"	70	0,217



► *Angle Radiator Valve (KV3)*

**new  
product**

PRODUCT CODE	SIZE	PCS/BOX	Pcs/Net Kgs
04.12.308	1/2" Pex-B	70	0,220

## ► WATER AND NATURAL GAS INSTALLATION PRODUCTS



### ► Lockshield Angle Radiator Valve

PRODUCT CODE	SIZE	PCS/BOX	Pcs/Net Kgs
04.04.303	1/2" 16x2	100	0,150
04.04.308	1/2" Corner Pex-B 16x2	100	0,150



### ► Lockshield Angle Radiator Valve Sealed Type

PRODUCT CODE	SIZE	PCS/BOX	Pcs/Net Kgs
04.10.303	1/2"	100	0,175
04.10.308	1/2" Pex-B	100	0,182



### ► Lockshield Radiator Valve Straight Type

PRODUCT CODE	SIZE	PCS/BOX	Pcs/Net Kgs
04.03.301	1/2"	100	0,180



### ► Lockshield Radiator Valve Straight Sealed Type

PRODUCT CODE	SIZE	PCS/BOX	Pcs/Net Kgs
04.10.301	1/2"	100	0,203



### ► Compact Thermostatic Valve

PRODUCT CODE	SIZE	PCS/BOX	Pcs/Net Kgs
13.60.010	Short Type	30	0,067
13.60.011	Long Type	30	0,167

\* Can be fixed to 15 °C min.

## ► WATER AND NATURAL GAS INSTALLATION PRODUCTS



### ► Angle Thermostatic Radiator Valve

EN 215

PRODUCT CODE	SIZE	PCS/BOX	Pcs/Net Kgs
13.40.001	1/2"	30	0,178

### ► Angle Thermostatic Radiator Valve

EN 215

PRODUCT CODE	SIZE	PCS/BOX	Pcs/Net Kgs
13.40.014	1/2" Pex-B	30	0,202



### ► Angle Thermostatic Radiator Valve

EN 215

PRODUCT CODE	SIZE	PCS/BOX	Pcs/Net Kgs
13.02.001	1/2"	30	0,317

### ► Angle Thermostatic Radiator Valve

EN 215

PRODUCT CODE	SIZE	PCS/BOX	Pcs/Net Kgs
13.15.014	1/2" Pex-B	30	0,351



### ► Axial Thermostatic Radiator Valve

EN 215

PRODUCT CODE	SIZE	PCS/BOX	Pcs/Net Kgs
13.09.007	1/2"	30	0,361

### ► Radiator Valve

EN 215

PRODUCT CODE	SIZE	PCS/BOX	Pcs/Net Kgs
13.04.009	1/2"	30	0,253

### ► Angle Thermostatic Radiator Valve (Plug-in System)

EN 215

PRODUCT CODE	SIZE	PCS/BOX	Pcs/Net Kgs
13.50.001	1/2"	30	0,393

### ► Angle Thermostatic Radiator Valve (Plug-in System)

EN 215

PRODUCT CODE	SIZE	PCS/BOX	Pcs/Net Kgs
13.50.002	1/2" Pex-B	30	0,393



## ► WATER AND NATURAL GAS INSTALLATION PRODUCTS

### ► *Straight Union*



PRODUCT CODE	SIZE	PCS/BOX	Pcs/Net Kgs
03.01.250	1/2"	150	0,115
03.01.251	3/4"	90	0,168
03.01.252	1"	50	0,251

### ► *Angle Union*



PRODUCT CODE	SIZE	PCS/BOX	Pcs/Net Kgs
03.02.260	1/2"	150	0,143
03.02.261	3/4"	100	0,208
03.02.262	1"	50	0,337

### ► *Reduction Nipple*



PRODUCT CODE	SIZE	PCS/BOX	Pcs/Net Kgs
02.03.210	3/8" - 1/2"	300	0,033
02.03.211	1/2" - 3/4"	250	0,052
02.03.212	3/4" - 1"	100	0,096

### ► *Proportionate*



PRODUCT CODE	SIZE	PCS/BOX	Pcs/Net Kgs
02.01.195	3/8" - 1/2"	500	0,018
02.01.196	1/2" - 3/4"	300	0,034

### ► *Nipples*



PRODUCT CODE	SIZE	PCS/BOX	Pcs/Net Kgs
02.02.200	3/8"	500	0,019
02.02.201	1/2"	250	0,033
02.02.202	3/4"	200	0,060
02.02.203	1"	100	0,112

### ► *Water Meter Fitting*



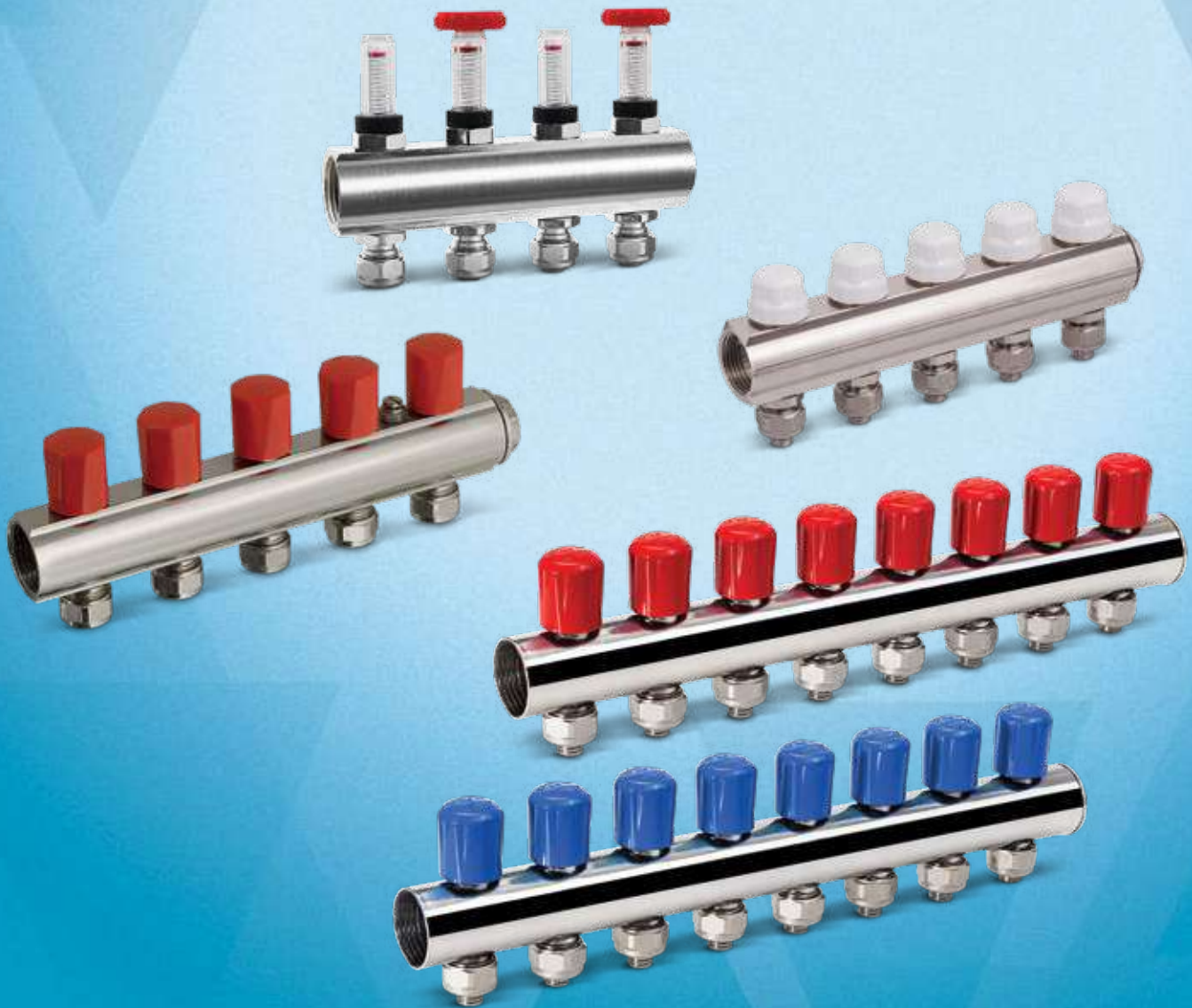
PRODUCT CODE	SIZE	PCS/BOX	Pcs/Net Kgs
80.22.191	3/4"	100	0,095

### ► *Coupling Hose Connection*



PRODUCT CODE	SIZE	PCS/BOX	Pcs/Net Kgs
80.23.241	1/2"	500	0,025
80.23.242	3/4"	300	0,034
80.23.243	1"	150	0,056
80.23.244	1 1/4"	100	0,081
80.23.245	1 1/2"	75	0,080
80.23.246	2"	40	0,222

# Manifold and Underfloor Heating



## ► MANIFOLD AND UNDERFLOOR HEATING GROUPS

### ► 1" Flow Meter Controlled Manifold (16X2)



TSEK

PRODUCT CODE	SIZE	PCS/BOX	Pcs/Net Kgs
18.15.502	2	21	0,579
18.15.503	3	14	0,870
18.15.504	4	14	1,146
18.15.505	5	14	1,443
18.15.506	6	7	1,740
18.15.507	7	7	2,016
18.15.508	8	7	2,313
18.15.509	9	7	2,410
18.15.510	10	7	2,836
18.15.511	11	7	3,183
18.15.512	12	7	3,480
18.15.513	13	7	3,756

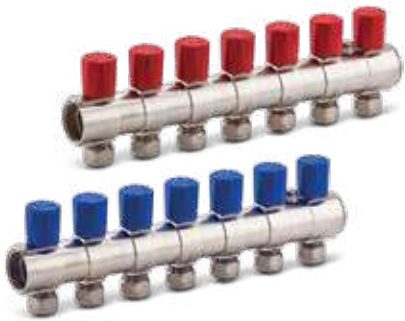
### ► 1" Thermostatic Manifold (16X2)



TSEK

PRODUCT CODE	SIZE	PCS/BOX	Pcs/Net Kgs
18.16.502	2	30	0,655
18.16.503	3	20	0,971
18.16.504	4	20	1,262
18.16.505	5	20	1,578
18.16.506	6	10	1,894
18.16.507	7	10	2,185
18.16.508	8	10	2,501
18.16.509	9	10	2,817
18.16.510	10	10	3,108
18.16.511	11	10	3,424
18.16.512	12	10	3,740
18.16.513	13	10	4,001

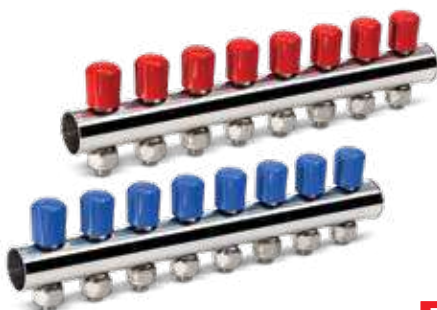
### ► 1" Completed Type Manifold - (Eco)



TSEK

PRODUCT CODE	SIZE	PCS/BOX	Pcs/Net Kgs
18.01.582	2	30	0,469
18.01.583	3	20	0,713
18.01.584	4	20	0,854
18.01.585	5	20	1,042
18.01.586	6	10	1,239
18.01.587	7	10	1,423
18.01.588	8	10	1,619
18.01.589	9	10	1,796
18.01.590	10	10	1,991
18.01.591	11	10	2,165
18.01.592	12	10	2,757
18.01.593	13	10	3,000

### ► 1" Stainless Steel Manifold (PN10)



TSEK

PRODUCT CODE	SIZE	PCS/BOX	Pcs/Net Kgs
18.21.682	2	30	0,395
18.21.683	3	20	0,550
18.21.684	4	20	0,720
18.21.685	5	20	0,880
18.21.686	6	10	1,040
18.21.687	7	10	1,174
18.21.688	8	10	1,332
18.21.689	9	10	1,536
18.21.690	10	10	1,675



## ► MANIFOLD AND UNDERFLOOR HEATING GROUPS

### ► Square Type Manifold Set With Flow Meter

**new  
product**



PRODUCT CODE	SIZE	PCS/BOX	Pcs/Net Kgs
18.22.902	2	1	
18.22.903	3	1	
18.22.904	4	1	
18.22.905	5	1	
18.22.906	6	1	
18.22.907	7	1	
18.22.908	8	1	
18.22.909	9	1	
18.22.910	10	1	
18.22.911	11	1	
18.22.912	12	1	

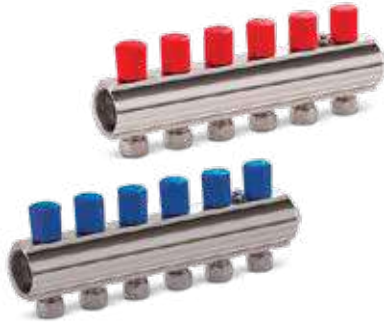
### ► 1" Manifold Completed Type



**TSEK**

PRODUCT CODE	SIZE	PCS/BOX	Pcs/Net Kgs
18.01.482	2	30	0,492
18.01.483	3	20	0,713
18.01.484	4	20	0,924
18.01.485	5	20	1,142
18.01.486	6	10	1,372
18.01.487	7	10	1,583
18.01.488	8	10	1,793
18.01.489	9	10	2,011
18.01.490	10	10	2,248
18.01.491	11	10	2,493
18.01.492	12	10	2,687
18.01.493	13	10	3,000

### ► 1" 1/4 Manifold Completed Type



**TSEK**

PRODUCT CODE	SIZE	PCS/BOX	Pcs/Net Kgs
18.03.702	2	16	0,750
18.03.703	3	16	1,128
18.03.704	4	16	1,469
18.03.705	5	16	1,804
18.03.706	6	8	1,926
18.03.707	7	8	2,462
18.03.708	8	8	2,514
18.03.709	9	8	2,851
18.03.710	10	8	3,136
18.03.711	11	8	3,805
18.03.712	12	8	4,145
18.03.713	13	8	4,479

### ► Mini Valve Manifold 1"



**TSEK**

PRODUCT CODE	SIZE	PCS/BOX	Pcs/Net Kgs
18.19.882	3/8" 2 Delikli	30	0,485
18.19.883	3/8" 3 Delikli	20	0,705
18.19.884	3/8" 4 Delikli	20	0,940
18.19.885	3/8" 5 Delikli	20	1,150
18.19.886	3/8" 6 Delikli	10	1,360
18.19.887	3/8" 7 Delikli	10	1,580
18.19.888	3/8" 8 Delikli	10	1,860
18.19.889	3/8" 9 Delikli	10	2,030
18.19.890	3/8" 10 Delikli	10	2,260
18.19.891	3/8" 11 Delikli	10	2,430
18.19.892	3/8" 12 Delikli	10	2,600
18.19.893	3/8" 13 Delikli	10	2,880

## ► MANIFOLD AND UNDERFLOOR HEATING GROUPS

### ► 1" Manifold



PRODUCT CODE	SIZE	PCS/BOX	Pcs/Net Kgs
18.02.352	2	20	0,373
18.02.353	3	20	0,531
18.02.354	4	20	0,710
18.02.355	5	20	0,890
18.02.356	6	10	1,035
18.02.357	7	10	1,248
18.02.358	8	10	1,425
18.02.359	9	10	1,560
18.02.360	10	10	1,725
18.02.361	11	10	1,903
18.02.362	12	10	2,139
18.02.363	13	10	2,443

TSEK



### ► 1" Drain Cock For Manifold

PRODUCT CODE	SIZE	PCS/BOX	Pcs/Net Kgs
18.09.350	Manuel	75	0,180
18.09.351	Auto	50	0,256



### ► Manifold By-pass

PRODUCT CODE	SIZE	PCS/BOX	Pcs/Net Kgs
14.01.878	16 X 2	40	0,286



### ► Mini Brass Ball Valve For Pipe Connection

PRODUCT CODE	SIZE	PCS/BOX	Pcs/Net Kgs
05.01.312	Pex-B F 16 x 2	180	0,125
05.01.313	Pex-B F 17 x 2	150	0,135

TSEK



### ► Mini Brass Ball Valve For Pipe Connection

PRODUCT CODE	SIZE	PCS/BOX	Pcs/Net Kgs
05.02.312	Pex-B M 16 x 2	150	0,146
05.02.313	Pex-B M 17 x 2	150	0,156
05.02.311	Pex-B M 16 x 2	150	0,156

TSEK



### ► Air Vent - Manifold Nippel

PRODUCT CODE	SIZE	PCS/BOX	Pcs/Net Kgs
80.57.507	1/2"	76	0,134

## ► MANIFOLD AND UNDERFLOOR HEATING GROUPS



### ► Under Floor Union For Pipe Connection

PRODUCT CODE	SIZE	PCS/BOX	Pcs/Net Kgs
06.01.314	16 X 2	250	0,054



### ► Under Floor Union For Pipe Connection

PRODUCT CODE	SIZE	PCS/BOX	Pcs/Net Kgs
06.02.315	16 X 2	250	0,062
06.02.316	17 X 2	250	0,085



### ► Under Floor Union For Pipe Connection

PRODUCT CODE	SIZE	PCS/BOX	Pcs/Net Kgs
06.01.317	17 X 2	250	0,080
06.01.318	16 X 2	250	0,054



### ► Hose Connection Coupling

PRODUCT CODE	SIZE	PCS/BOX	Pcs/Net Kgs
06.03.319	16 X 2	250	0,084



### ► Hose Connection Coupling

PRODUCT CODE	SIZE	PCS/BOX	Pcs/Net Kgs
06.03.320	16 X 2	250	0,079



### ► Hose Blind Plug

PRODUCT CODE	SIZE	PCS/BOX	Pcs/Net Kgs
06.04.480	16 X 2	250	0,079



### ► Manifold Box

PRODUCT CODE	SIZE	PCS/BOX	Pcs/Net Kgs
70.01.390	40 x 60	1	6,600
70.01.391	60 x 60	1	7,480
70.01.392	80 x 60	1	10,000



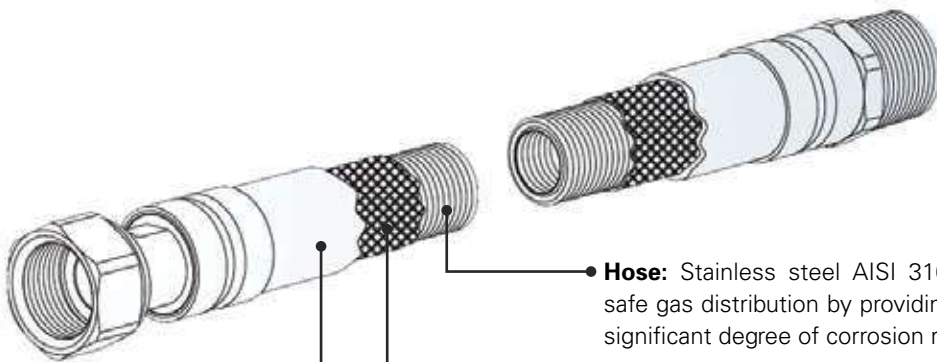
### ► Manifold Clamp

PRODUCT CODE	SIZE	PCS/BOX	Pcs/Net Kgs
18.20.502	1"	40	0,224
18.20.503	1 1/4"	30	0,282
18.20.504	1"	40	0,215

# Gas Connection Hoses



# *3 Layer, Extra Flexible, Extra Durable...*



- **Hose:** Stainless steel AISI 316L (1.4404) is used for achieving safe gas distribution by providing a highly flexible structure with a significant degree of corrosion resistance.
- **Braid:** Stainless steel mesh AISI 304 (1.4301) forms the second layer, which prevents overloading and protects the structure from mechanical damage.
- **PVC Coating:** Transparent PVC coating aims to protect the hose from external influences such as harmful cleaners.

## ► GAS CONNECTION HOSES



**Nut – Nipple (M/F)**

PRODUCT CODE	SIZE	PCS/BOX	Pcs/Net Kgs
<b>► Cooker-Oven-Stove (1/2"-1/2")</b>			
41.10.030	30 cm	75	0,119
41.10.040	40 cm	75	0,127
41.10.050	50 cm	75	0,138
41.10.060	60 cm	75	0,149
41.10.070	70 cm	75	0,161
41.10.080	80 cm	50	0,174
41.10.090	90 cm	50	0,186
41.10.100	100 cm	50	0,196
41.10.120	120 cm	50	0,220
41.10.150	150 cm	20	0,257
<b>► Combi Boiler (1/2" - 3/4")</b>			
41.12.030	30 cm	50	0,135
41.12.040	40 cm	50	0,145
41.12.050	50 cm	50	0,155
41.12.060	60 cm	50	0,170
41.12.070	70 cm	50	0,180
41.12.080	80 cm	50	0,191
41.12.090	90 cm	50	0,202
41.12.100	100 cm	30	0,213
41.12.120	120 cm	30	0,235
41.12.150	150 cm	30	0,267
41.12.200	200 cm	20	0,323
*Pipe 1/2"			
<b>► Combi Boiler (3/4" - 3/4")</b>			
42.13.030	30 cm	50	0,163
42.13.040	40 cm	50	0,185
42.13.050	50 cm	50	0,207
42.13.060	60 cm	30	0,229
42.13.070	70 cm	30	0,251
42.13.080	80 cm	30	0,273
42.13.090	90 cm	30	0,295
42.13.100	100 cm	30	0,317
42.13.120	120 cm	30	0,361
42.13.150	150 cm	20	0,411
42.13.200	200 cm	20	0,487



**Nut – Nut (F/F)**

PRODUCT CODE	SIZE	PCS/BOX	Pcs/Net Kgs
<b>► Cooker-Oven-Stove (1/2"-1/2")</b>			
41.18.030	30 cm	75	0,113
41.18.040	40 cm	75	0,123
41.18.050	50 cm	75	0,134
41.18.060	60 cm	50	0,143
41.18.070	70 cm	50	0,154
41.18.080	80 cm	50	0,168
41.18.090	90 cm	50	0,181
41.18.100	100 cm	50	0,194
41.18.120	120 cm	50	0,214
41.18.150	150 cm	25	0,251
<b>► Combi Boiler (1/2" - 3/4")</b>			
41.14.030	30 cm	50	0,129
41.14.040	40 cm	50	0,139
41.14.050	50 cm	50	0,149
41.14.060	60 cm	50	0,164
41.14.070	70 cm	50	0,174
41.14.080	80 cm	50	0,185
41.14.090	90 cm	50	0,196
41.14.100	100 cm	30	0,208
41.14.120	120 cm	30	0,229
41.14.150	150 cm	30	0,261
41.14.200	200 cm	20	0,317
*Pipe 1/2"			
<b>► Combi Boiler (3/4" - 3/4")</b>			
42.19.030	30 cm	50	0,155
42.19.040	40 cm	50	0,179
42.19.050	50 cm	50	0,201
42.19.060	60 cm	30	0,223
42.19.070	70 cm	30	0,244
42.19.080	80 cm	30	0,267
42.19.090	90 cm	30	0,289
42.19.100	100 cm	30	0,311
42.19.120	120 cm	30	0,355
42.19.150	150 cm	20	0,406
42.19.200	200 cm	20	0,481

## ► INSULATED GAS CONNECTION HOSES



**Nut – Nipple (M/F)**

PRODUCT CODE	SIZE	PCS/BOX	Pcs/Net Kgs
► <b>Cooker-Oven-Stove (1/2"-1/2")</b>			
41.11.030	30 cm	75	0,123
41.11.040	40 cm	75	0,142
41.11.050	50 cm	50	0,161
41.11.060	60 cm	50	0,170
41.11.070	70 cm	50	0,182
41.11.080	80 cm	50	0,192
41.11.090	90 cm	50	0,205
41.11.100	100 cm	50	0,215
41.11.120	120 cm	50	0,235
41.11.150	150 cm	20	0,261
► <b>Combi Boiler (1/2" - 3/4")</b>			
41.13.030	30 cm	50	0,140
41.13.040	40 cm	50	0,151
41.13.050	50 cm	50	0,162
41.13.060	60 cm	50	0,174
41.13.070	70 cm	50	0,185
41.13.080	80 cm	50	0,196
41.13.090	90 cm	50	0,206
41.13.100	100 cm	30	0,218
41.13.120	120 cm	30	0,240
41.13.150	150 cm	30	0,272
41.13.200	200 cm	20	0,328
*Pipe 1/2"			
► <b>Combi Boiler (3/4" - 3/4")</b>			
42.20.030	30 cm	50	0,175
42.20.040	40 cm	50	0,185
42.20.050	50 cm	50	0,195
42.20.060	60 cm	30	0,212
42.20.070	70 cm	30	0,230
42.20.080	80 cm	30	0,255
42.20.090	90 cm	30	0,265
42.20.100	100 cm	30	0,290
42.20.120	120 cm	30	0,322
42.20.150	150 cm	20	0,373
42.20.200	200 cm	20	0,458



**Nut – Nut (F/F)**

PRODUCT CODE	SIZE	PCS/BOX	Pcs/Net Kgs
► <b>Cooker-Oven-Stove (1/2"-1/2")</b>			
41.19.030	30 cm	75	0,117
41.19.040	40 cm	75	0,136
41.19.050	50 cm	75	0,155
41.19.060	60 cm	50	0,164
41.19.070	70 cm	50	0,176
41.19.080	80 cm	50	0,199
41.19.090	90 cm	50	0,209
41.19.100	100 cm	50	0,221
41.19.120	120 cm	50	0,232
41.19.150	150 cm	20	0,255
► <b>Combi Boiler (1/2" - 3/4")</b>			
41.15.030	30 cm	50	0,134
41.15.040	40 cm	50	0,144
41.15.050	50 cm	50	0,154
41.15.060	60 cm	50	0,169
41.15.070	70 cm	50	0,179
41.15.080	80 cm	50	0,190
41.15.090	90 cm	50	0,201
41.15.100	100 cm	30	0,213
41.15.120	120 cm	30	0,234
41.15.150	150 cm	30	0,265
41.15.200	200 cm	20	0,322
*Pipe 1/2"			
► <b>Combi Boiler (3/4" - 3/4")</b>			
42.21.030	30 cm	50	0,170
42.21.040	40 cm	50	0,180
42.21.050	50 cm	50	0,190
42.21.060	60 cm	30	0,207
42.21.070	70 cm	30	0,220
42.21.080	80 cm	30	0,250
42.21.090	90 cm	30	0,260
42.21.100	100 cm	30	0,284
42.21.120	120 cm	30	0,317
42.21.150	150 cm	20	0,367
42.21.200	200 cm	20	0,451

## ► GAS HOSES FOR COUNTER CONNECTION



PRODUCT CODE	SIZE	PCS/BOX	Pcs/Net Kgs
50.25.020	1" - 20 cm	30	0,448
50.25.025	1" - 25 cm	30	0,404
50.25.032	1" - 32 cm	30	0,077
50.25.023	G 6 1" - 23 cm	30	0,047
50.40.035	G 10-16	10	0,970
50.50.035	G 25	8	1,388

## ► INSULATED GAS HOSES FOR COUNTER CONNECTION



PRODUCT CODE	SIZE	PCS/BOX	Pcs/Net Kgs
50.26.020	1" - 20 cm	30	0,454
50.26.025	1" - 25 cm	30	0,474
50.26.032	1" - 32 cm	30	0,500
50.28.023	G 6 1" - 23 cm	30	0,458
50.41.035	G 10-16	10	0,995
50.51.035	G 25	8	1,430

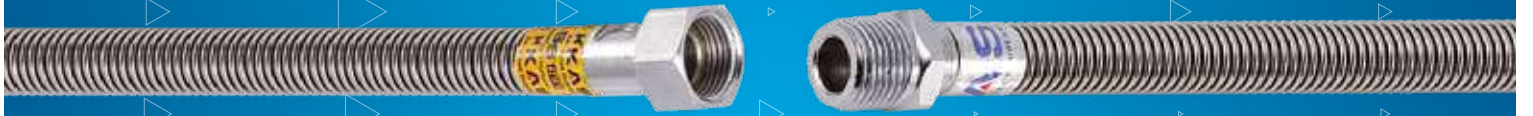
## ► FLATTENING TOOL



PRODUCT CODE	SIZE	PCS/BOX	Pcs/Net Kgs
46.12.016	DN12-DN16	1	
46.20.025	DN20-DN25	1	
46.70.001	Body	1	



# Braided High Quality Gas Connection Hoses



# HIGH STANDARD



## ► BRAIDED HIGH QUALITY GAS CONNECTION HOSES



### Nut – Nipple (M/F)

PRODUCT CODE	SIZE	PCS/BOX	Pcs/Net Kgs
► <b>1/2" - 1/2"</b>			
54.06.050	50 cm	25	0,255
54.06.075	75 cm	25	0,321
54.06.100	100 cm	25	0,399
54.06.125	125 cm	25	0,467
54.06.150	150 cm	20	0,515
54.06.175	175 cm	20	0,591
54.06.200	200 cm	20	0,655
► <b>With Elbow 1/2" - 1/2"</b>			
54.11.050	50 cm	25	0,221
54.11.075	75 cm	25	0,321
54.11.100	100 cm	25	0,426
54.11.125	125 cm	25	0,527
54.11.150	150 cm	25	0,637
54.11.175	175 cm	25	0,642
54.11.200	200 cm	25	0,826
► <b>With Bayonet 1/2" - 1/2"</b>			
54.13.050	50 cm	30	0,450
54.13.075	75 cm	30	0,675
54.13.100	100 cm	30	0,900
54.13.125	125 cm	20	1,125
54.13.150	150 cm	20	1,350
54.13.175	175 cm	20	1,575
54.13.200	200 cm	20	1,800



### Nut – Nut (F/F)

PRODUCT CODE	SIZE	PCS/BOX	Pcs/Net Kgs
► <b>1/2" - 1/2"</b>			
54.07.050	50 cm	25	0,219
54.07.075	75 cm	25	0,305
54.07.100	100 cm	25	0,352
54.07.125	125 cm	25	0,423
54.07.150	150 cm	25	0,393
54.07.175	175 cm	25	0,245
54.07.200	200 cm	25	0,619
► <b>With Elbow 1/2" - 1/2"</b>			
54.10.050	50 cm	30	0,215
54.10.075	75 cm	30	0,315
54.10.100	100 cm	30	0,420
54.10.125	125 cm	20	0,521
54.10.150	150 cm	20	0,630
54.10.175	175 cm	20	0,737
54.10.200	200 cm	20	0,820

# Water Connection Hoses



**EXTRA  
FLEXIBILITY  
EXTRA  
DURABILITY**

## ► WATER CONNECTION HOSES



### Nut – Nipple (M/F)

PRODUCT CODE	SIZE	PCS/BOX	Pcs/Net Kgs
► 1/2" - 1/2"			
44.20.010	10 cm	100	0,074
44.20.020	20 cm	100	0,077
44.20.030	30 cm	75	0,096
44.20.040	40 cm	75	0,106
44.20.050	50 cm	75	0,116
44.20.060	60 cm	50	0,127
44.20.070	70 cm	50	0,133
44.20.080	80 cm	50	0,142
44.20.090	90 cm	50	0,151
44.20.100	100 cm	50	0,160
44.20.120	120 cm	50	0,178
44.20.150	150 cm	20	0,205
44.20.200	200 cm	20	0,250
► 1/2" - 3/4"			
44.22.010	10 cm	100	0,110
44.22.020	20 cm	75	0,120
44.22.030	30 cm	75	0,130
44.22.040	40 cm	50	0,140
44.22.050	50 cm	50	0,150
44.22.060	60 cm	50	0,157
44.22.070	70 cm	50	0,165
44.22.080	80 cm	50	0,174
44.22.090	90 cm	50	0,183
44.22.100	100 cm	50	0,192
44.22.120	120 cm	50	0,210
44.22.150	150 cm	20	0,237
44.22.200	200 cm	20	0,282
*Pipe 1/2"			
► 3/4" - 3/4"			
45.23.010	10 cm	100	0,109
45.23.020	20 cm	60	0,124
45.23.030	30 cm	50	0,141
45.23.040	40 cm	50	0,156
45.23.050	50 cm	50	0,171
45.23.060	60 cm	30	0,183
45.23.070	70 cm	30	0,205
45.23.080	80 cm	30	0,221
45.23.090	90 cm	30	0,231
45.23.100	100 cm	30	0,246
45.23.120	120 cm	30	0,263
45.23.150	150 cm	20	0,312
45.23.200	200 cm	20	0,385



### Nut – Nut (F/F)

PRODUCT CODE	SIZE	PCS/BOX	Pcs/Net Kgs
► 1/2" - 1/2"			
44.21.010	10 cm	100	0,056
44.21.020	20 cm	100	0,065
44.21.030	30 cm	75	0,075
44.21.040	40 cm	75	0,084
44.21.050	50 cm	75	0,094
44.21.060	60 cm	50	0,102
44.21.070	70 cm	50	0,110
44.21.080	80 cm	50	0,118
44.21.090	90 cm	50	0,126
44.21.100	100 cm	50	0,135
44.21.120	120 cm	50	0,155
44.21.150	150 cm	20	0,183
44.21.200	200 cm	20	0,223
► 1/2" - 3/4"			
44.23.010	10 cm	100	0,086
44.23.020	20 cm	75	0,096
44.23.030	30 cm	75	0,105
44.23.040	40 cm	50	0,114
44.23.050	50 cm	50	0,123
44.23.060	60 cm	50	0,133
44.23.070	70 cm	50	0,143
44.23.080	80 cm	50	0,151
44.23.090	90 cm	50	0,158
44.23.100	100 cm	50	0,167
44.23.120	120 cm	50	0,185
44.23.150	150 cm	20	0,212
44.23.200	200 cm	20	0,257
*Pipe 1/2"			
► 3/4" - 3/4"			
45.24.010	10 cm	100	0,081
45.24.020	20 cm	60	0,097
45.24.030	30 cm	50	0,114
45.24.040	40 cm	50	0,126
45.24.050	50 cm	50	0,140
45.24.060	60 cm	30	0,154
45.24.070	70 cm	30	0,169
45.24.080	80 cm	30	0,183
45.24.090	90 cm	30	0,198
45.24.100	100 cm	30	0,213
45.24.120	120 cm	30	0,241
45.24.150	150 cm	20	0,284
45.24.200	200 cm	20	0,357

## ► INSULATED WATER CONNECTION HOSES



### Nut – Nipple (M/F)

PRODUCT CODE	SIZE	PCS/BOX	Pcs/Net Kgs
► 1/2" - 1/2"			
44.20.011	10 cm	100	0,079
44.20.021	20 cm	100	0,082
44.20.031	30 cm	75	0,101
44.20.041	40 cm	75	0,111
44.20.051	50 cm	75	0,121
44.20.061	60 cm	50	0,131
44.20.071	70 cm	50	0,137
44.20.081	80 cm	50	0,148
44.20.091	90 cm	50	0,156
44.20.101	100 cm	50	0,164
44.20.121	120 cm	50	0,183
44.20.151	150 cm	20	0,210
44.20.201	200 cm	20	0,258
► 1/2" - 3/4"			
44.22.011	10 cm	100	0,113
44.22.021	20 cm	75	0,124
44.22.031	30 cm	75	0,134
44.22.041	40 cm	50	0,145
44.22.051	50 cm	50	0,156
44.22.061	60 cm	50	0,162
44.22.071	70 cm	50	0,171
44.22.081	80 cm	50	0,179
44.22.091	90 cm	50	0,190
44.22.100	100 cm	50	0,199
44.22.120	120 cm	50	0,220
44.22.150	150 cm	25	0,248
44.22.200	200 cm	20	0,300
*Pipe 1/2"			
► 3/4" - 3/4"			
45.23.011	10 cm	100	0,112
45.23.021	20 cm	60	0,128
45.23.031	30 cm	50	0,145
45.23.041	40 cm	50	0,160
45.23.051	50 cm	50	0,176
45.23.061	60 cm	30	0,190
45.23.071	70 cm	30	0,210
45.23.081	80 cm	30	0,228
45.23.091	90 cm	30	0,237
45.23.101	100 cm	30	0,255
45.23.121	120 cm	30	0,270
45.23.151	150 cm	20	0,320
45.23.201	200 cm	20	0,397



### Nut – Nut (F/F)

PRODUCT CODE	SIZE	PCS/BOX	Pcs/Net Kgs
► 1/2" - 1/2"			
44.21.011	10 cm	100	0,058
44.21.021	20 cm	100	0,068
44.21.031	30 cm	75	0,078
44.21.041	40 cm	75	0,089
44.21.051	50 cm	75	0,099
44.21.061	60 cm	50	0,107
44.21.071	70 cm	50	0,115
44.21.081	80 cm	50	0,123
44.21.091	90 cm	50	0,133
44.21.101	100 cm	50	0,142
44.21.121	120 cm	50	0,162
44.21.151	150 cm	20	0,191
44.21.201	200 cm	20	0,232
► 1/2" - 3/4"			
44.23.011	10 cm	100	0,088
44.23.021	20 cm	75	0,100
44.23.031	30 cm	75	0,108
44.23.041	40 cm	50	0,118
44.23.051	50 cm	50	0,128
44.23.061	60 cm	50	0,137
44.23.071	70 cm	50	0,149
44.23.081	80 cm	50	0,156
44.23.091	90 cm	50	0,165
44.23.100	100 cm	50	0,175
44.23.120	120 cm	50	0,192
44.23.150	150 cm	20	0,219
44.23.200	200 cm	20	0,265
*Pipe 1/2"			
► 3/4" - 3/4"			
45.24.011	10 cm	100	0,084
45.24.021	20 cm	60	0,100
45.24.031	30 cm	50	0,117
45.24.041	40 cm	50	0,130
45.24.051	50 cm	50	0,145
45.24.061	60 cm	30	0,160
45.24.071	70 cm	30	0,175
45.24.081	80 cm	30	0,189
45.24.091	90 cm	30	0,205
45.24.101	100 cm	30	0,218
45.24.121	120 cm	30	0,249
45.24.151	150 cm	20	0,293
45.24.201	200 cm	20	0,369

**Extensible  
Connection Hoses**

**WELL,  
the long and  
short of it**





## ► EXTENSIBLE CONNECTION HOSES



### Nut – Nipple (M/F)

PRODUCT CODE	SIZE	PCS/BOX	Pcs/Net Kgs
► <b>1/2" - 1/2"</b>			
30.11.020	10 - 20 cm	75	0,090
30.21.040	20 - 40 cm	75	0,124
30.31.060	30 - 60 cm	75	0,145
30.51.100	50 - 100 cm	75	0,175
30.76.150	75 - 150 cm	50	0,225
30.11.200	100 - 200 cm	50	0,265
► <b>3/4" - 3/4"</b>			
31.11.020	10 - 20 cm	50	0,178
31.21.040	20 - 40 cm	50	0,179
31.31.060	30 - 60 cm	50	0,214
31.51.100	50 - 100 cm	50	0,290
31.76.150	75 - 150 cm	30	0,372
31.11.200	100 - 200 cm	30	0,459
► <b>1" - 1"</b>			
32.11.020	10 - 20 cm	30	0,469
32.21.040	20 - 40 cm	30	0,533
32.31.060	30 - 60 cm	30	0,597
32.51.100	50 - 100 cm	30	0,725
32.76.150	75 - 150 cm	20	0,885
32.11.200	100 - 200 cm	20	1,045



### Nut – Nut (F/F)

PRODUCT CODE	SIZE	PCS/BOX	Pcs/Net Kgs
► <b>1/2" - 1/2"</b>			
30.10.020	10 - 20 cm	75	0,086
30.20.040	20 - 40 cm	75	0,114
30.30.060	30 - 60 cm	75	0,133
30.50.100	50 - 100 cm	75	0,168
30.75.150	75 - 150 cm	50	0,218
30.10.200	100 - 200 cm	50	0,260
► <b>3/4" - 3/4"</b>			
31.10.020	10 - 20 cm	50	0,173
31.20.040	20 - 40 cm	50	0,168
31.31.060	30 - 60 cm	50	0,203
31.50.100	50 - 100 cm	50	0,273
31.75.150	75 - 150 cm	30	0,361
31.10.200	100 - 200 cm	30	0,448
► <b>1" - 1"</b>			
32.10.020	10 - 20 cm	30	0,606
32.20.040	20 - 40 cm	30	0,670
32.32.060	30 - 60 cm	30	0,734
32.50.100	50 - 100 cm	30	0,862
32.75.150	75 - 150 cm	20	1,022
32.10.200	100 - 200 cm	20	1,182

\*Economic model with carbon steel fittings are available on request



## ► INSULATED EXTENSIBLE CONNECTION HOSES



### Nut – Nipple (M/F)

PRODUCT CODE	SIZE	PCS/BOX	Pcs/Net Kgs
► <b>1/2" - 1/2"</b>			
30.11.021	10 - 20 cm	75	0,094
30.21.041	20 - 40 cm	75	0,127
30.31.061	30 - 60 cm	75	0,150
30.51.101	50 - 100 cm	75	0,180
30.76.151	75 - 150 cm	50	0,233
30.11.201	100 - 200 cm	50	0,273
► <b>3/4" - 3/4"</b>			
31.11.021	10 - 20 cm	50	0,182
31.21.041	20 - 40 cm	50	0,192
31.31.061	30 - 60 cm	50	0,218
31.51.101	50 - 100 cm	50	0,295
31.76.151	75 - 150 cm	30	0,376
31.11.201	100 - 200 cm	30	0,467
► <b>1" - 1"</b>			
32.11.021	10 - 20 cm	30	0,469
32.21.041	20 - 40 cm	30	0,533
32.31.061	30 - 60 cm	30	0,597
32.51.101	50 - 100 cm	30	0,725
32.76.151	75 - 150 cm	20	0,885
32.11.201	100 - 200 cm	20	1,045



### Nut – Nut (F/F)

PRODUCT CODE	SIZE	PCS/BOX	Pcs/Net Kgs
► <b>1/2" - 1/2"</b>			
30.10.021	10 - 20 cm	75	0,090
30.20.041	20 - 40 cm	75	0,117
30.30.061	30 - 60 cm	75	0,138
30.50.101	50 - 100 cm	75	0,176
30.75.151	75 - 150 cm	50	0,225
30.10.201	100 - 200 cm	50	0,269
► <b>3/4" - 3/4"</b>			
31.10.021	10 - 20 cm	50	0,177
31.20.041	20 - 40 cm	50	0,168
31.30.061	30 - 60 cm	50	0,206
31.50.101	50 - 100 cm	50	0,284
31.75.151	75 - 150 cm	30	0,365
31.10.201	100 - 200 cm	30	0,456
► <b>1" - 1"</b>			
32.10.021	10 - 20 cm	30	0,606
32.20.041	20 - 40 cm	30	0,670
32.32.061	30 - 60 cm	30	0,734
32.50.101	50 - 100 cm	30	0,862
32.75.151	75 - 150 cm	20	1,022
32.10.201	100 - 200 cm	20	1,182

\*Economic model with carbon steel fittings are available on request

# **Rubber Insulated Fancoil Flex Hoses**

**MOISTURE RESISTANT  
QUICK AND SAFE  
SOLUTION**



- ▶ **Moisture Resistant,**
- ▶ **Less effort,**
- ▶ **Protection against sound.**



▶ **Rubber Insulated Fancoil Flex Hoses,**

have a bendable and flexible structure. Reliable, quick and easy connection, saving time, pressure and temperature resistant hoses. It prevents the sweating in heating-cooling systems due to rubber insulation.

Rubber Insulated Fancoil Flex Hoses eliminate the problems caused by rigid connection. In very short distances, you can save time with less effort by using hoses instead of mounting with elbows, coupling and union.

KAS Insulated Fancoil Connection Hoses with long service life; practical, safe, quick and easy installation. Thanks to their flexible structure, they are safe against vibration and noise.

## ► FANCOIL WATER CONNECTION HOSES



### Nut – Nipple (M/F)

PRODUCT CODE	SIZE	PCS/BOX	Pcs/Net Kgs
► 1/2" - 1/2"			
43.17.020	20 cm	50	0,085
43.17.025	25 cm	50	0,095
43.17.030	30 cm	50	0,119
43.17.035	35 cm	50	0,124
43.17.040	40 cm	50	0,127
43.17.050	50 cm	50	0,138
43.17.060	60 cm	50	0,149
43.17.070	70 cm	50	0,161
43.17.080	80 cm	50	0,174
► 1/2" - 3/4"			
43.21.020	20 cm	50	0,102
43.21.025	25 cm	50	0,108
43.21.030	30 cm	50	0,113
43.21.035	35 cm	50	0,118
43.21.040	40 cm	50	0,123
43.21.050	50 cm	50	0,134
43.21.060	60 cm	50	0,145
43.21.070	70 cm	50	0,156
43.21.080	80 cm	50	0,167
*Pipe 1/2"			
► 3/4" - 3/4"			
43.19.020	20 cm	50	0,148
43.19.025	25 cm	50	0,158
43.19.030	30 cm	50	0,169
43.19.035	35 cm	50	0,178
43.19.040	40 cm	50	0,183
43.19.050	50 cm	50	0,198
43.19.060	60 cm	30	0,218
43.19.070	70 cm	30	0,237
43.19.080	80 cm	30	0,254
► 3/4" - 1"			
43.23.020	20 cm	50	0,168
43.23.025	25 cm	50	0,176
43.23.030	30 cm	50	0,184
43.23.035	35 cm	50	0,193
43.23.040	40 cm	50	0,200
43.23.050	50 cm	50	0,223
43.23.060	60 cm	50	0,243
43.23.070	70 cm	50	0,263
43.23.080	80 cm	50	0,283
*Pipe 3/4"			



### Nut – Nut (F/F)

PRODUCT CODE	SIZE	PCS/BOX	Pcs/Net Kgs
► 1/2" - 1/2"			
43.47.020	20 cm	50	0,070
43.47.025	25 cm	50	0,075
43.47.030	30 cm	50	0,080
43.47.035	35 cm	50	0,085
43.47.040	40 cm	50	0,090
43.47.050	50 cm	50	0,095
43.47.060	60 cm	50	0,110
43.47.070	70 cm	50	0,120
43.47.080	80 cm	50	0,133
► 3/4" - 3/4"			
43.49.020	20 cm	50	0,142
43.49.025	25 cm	50	0,150
43.49.030	30 cm	50	0,158
43.49.035	35 cm	50	0,165
43.49.040	40 cm	50	0,176
43.49.050	50 cm	50	0,193
43.49.060	60 cm	30	0,210
43.49.070	70 cm	30	0,230
43.49.080	80 cm	30	0,252

## ► RUBBER INSULATED FANCOIL WATER CONNECTION HOSES



**Nut – Nipple (M/F)**

PRODUCT CODE	SIZE	PCS/BOX	Pcs/Net Kgs
► <b>1/2" - 1/2"</b>			
43.18.020	20 cm	25	0,110
43.18.025	25 cm	25	0,117
43.18.030	30 cm	25	0,120
43.18.035	35 cm	25	0,126
43.18.040	40 cm	25	0,163
43.18.050	50 cm	25	0,166
43.18.060	60 cm	25	0,175
43.18.070	70 cm	25	0,194
43.18.080	80 cm	25	0,205
► <b>1/2" - 3/4"</b>			
43.22.020	20 cm	25	0,112
43.22.025	25 cm	25	0,117
43.22.030	30 cm	25	0,122
43.22.035	35 cm	25	0,128
43.22.040	40 cm	25	0,140
43.22.050	50 cm	25	0,155
43.22.060	60 cm	25	0,165
43.22.070	70 cm	25	0,180
43.22.080	80 cm	25	0,210
*Pipe 1/2"			
► <b>3/4" - 3/4"</b>			
43.20.020	20 cm	25	0,174
43.20.025	25 cm	25	0,184
43.20.030	30 cm	25	0,189
43.20.035	35 cm	25	0,200
43.20.040	40 cm	20	0,224
43.20.050	50 cm	20	0,232
43.20.060	60 cm	20	0,263
43.20.070	70 cm	20	0,288
43.20.080	80 cm	20	0,310
► <b>3/4" - 1"</b>			
43.24.020	20 cm	25	0,184
43.24.025	25 cm	25	0,194
43.24.030	30 cm	25	0,202
43.24.035	35 cm	25	0,212
43.24.040	40 cm	25	0,224
43.24.050	50 cm	25	0,232
43.24.060	60 cm	25	0,263
43.24.070	70 cm	25	0,288
43.24.080	80 cm	25	0,310
*Pipe 3/4"			



**Nut – Nut (F/F)**

PRODUCT CODE	SIZE	PCS/BOX	Pcs/Net Kgs
► <b>1/2" - 1/2"</b>			
43.48.020	20 cm	25	0,105
43.48.025	25 cm	25	0,110
43.48.030	30 cm	25	0,115
43.48.035	35 cm	25	0,121
43.48.040	40 cm	25	0,158
43.48.050	50 cm	25	0,162
43.48.060	60 cm	25	0,170
43.48.070	70 cm	25	0,190
43.48.080	80 cm	25	0,200
► <b>3/4" - 3/4"</b>			
43.50.020	20 cm	25	0,110
43.50.025	25 cm	25	0,123
43.50.030	30 cm	25	0,135
43.50.035	35 cm	25	0,147
43.50.040	40 cm	20	0,162
43.50.050	50 cm	20	0,175
43.50.060	60 cm	20	0,187
43.50.070	70 cm	20	0,204
43.50.080	80 cm	20	0,221

# Implement Chart

**Gas:** Natural gas, LPG

**Product Max Working Pressure:**

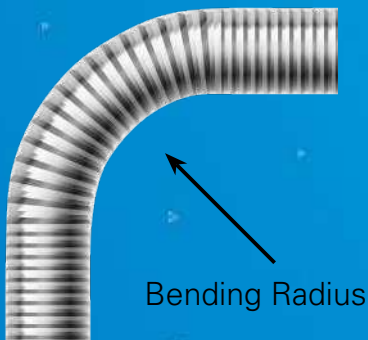
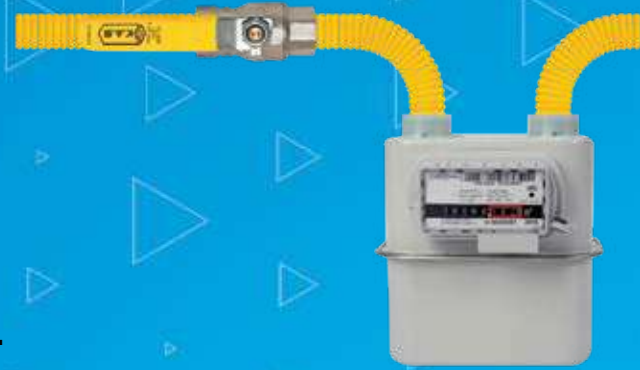
Less than or equal to 500 mbar (0.5 bar).

**KAS-TAK Flex Implementation Area Pressure:**

If the implementation is to be used in residential or domestic appliances (boiler, stove, hot water heater, etc.), the gas pressure after the meter can be made for installations up to 21 mbar.

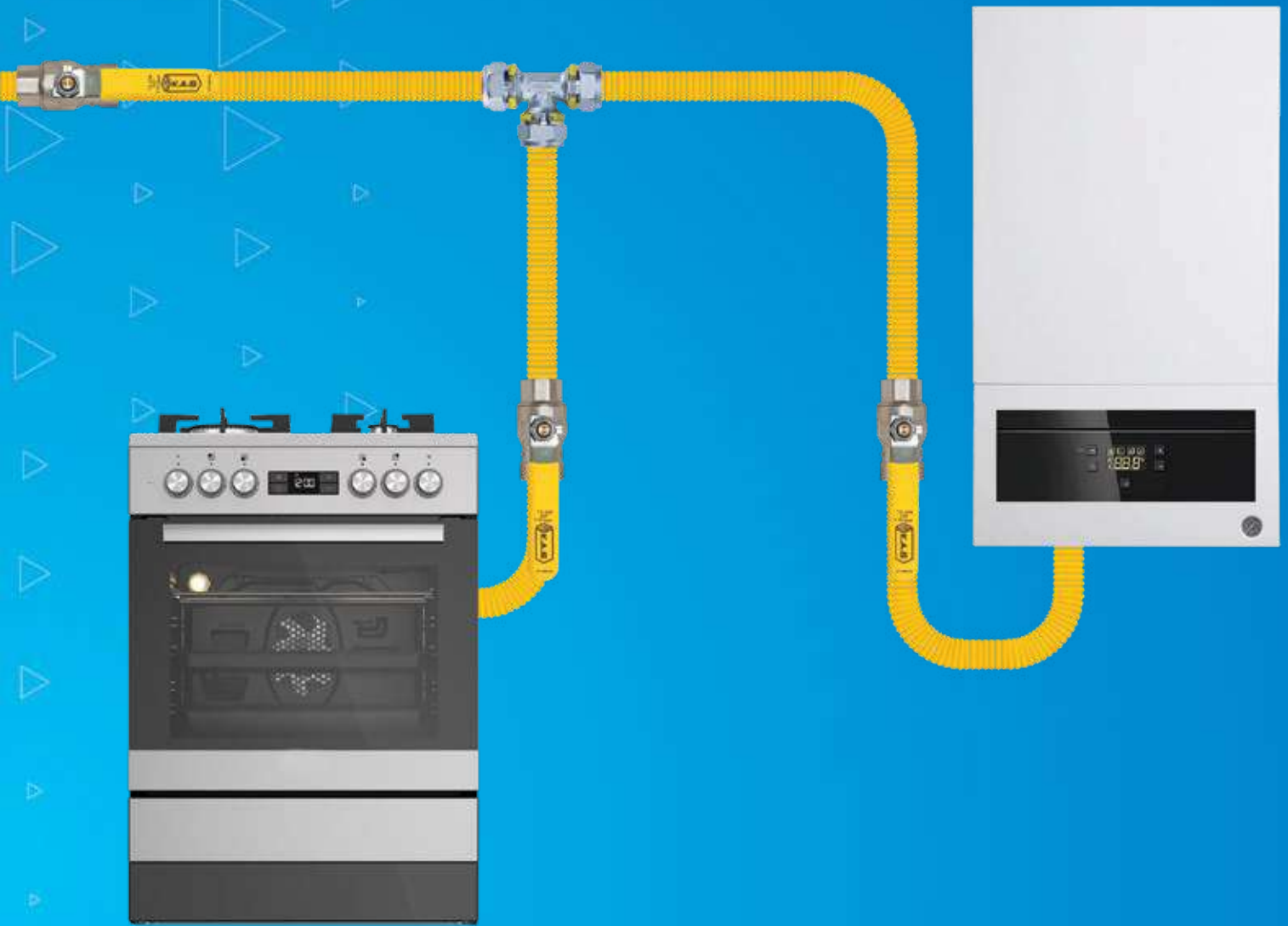
**KAS-TAK Sample Piping System**

Chart KAS-TAK Hose Bending Radius



## KAS-TAK Hose Bending Radius

Min Bending Radius (mm)		
DN 16	DN 20	DN 25
20	25	30



**KASTAK<sup>®</sup>**  
*new generation natural gas installation*

## ► KAS-TAK GAS CONNECTION SYSTEMS



### ► KAS - TAK Indoor Gas Appliances

PRODUCT CODE	SIZE	PCS/BOX	Pcs/Net Kgs
62.30.016	DN 16 45 mt	1	11,730
62.30.020	DN 20 30 mt	1	9,490
62.30.025	DN 25 25 mt	1	11,250
62.30.050	DN 25 50 mt	1	16,60
62.32.020	DN 32 20 mt	1	8,480



### ► T-Connection Union

PRODUCT CODE	SIZE	PCS/BOX	Pcs/Net Kgs
61.20.020	DN25 x DN20 x DN20	20	0,470
61.20.021	DN20 x DN25 x DN20	10	0,470
61.20.025	DN25 x DN20 x DN25	20	0,544
61.25.020	DN25 x DN25 x DN20	20	0,475
61.25.025	DN25 x DN25 x DN25	20	0,657



### ► Metal-Metal Quick Coupling Union

PRODUCT CODE	SIZE	PCS/BOX	Pcs/Net Kgs
60.16.012	DN16 x 1/2"	30	0,175
60.16.016	DN16 x 3/4"	30	0,175
60.20.012	DN20 x 1/2"	30	0,179
60.20.016	DN20 x 3/4"	30	0,193
60.25.012	DN25 x 1/2"	24	0,255
60.25.016	DN25 x 3/4"	24	0,258
60.25.025	DN25 x 1"	24	0,266
60.32.025	DN32 x 1"	9	
60.32.032	DN32 x 1" 1/4"	9	



### ► Clamp For Indoor Gas Appliances

PRODUCT CODE	SIZE	PCS/BOX	Pcs/Net Kgs
60.04.012	1/2" - 3/4" Valve Clamp	300	0,0295
60.04.020	DN20 T Clamp	200	0,0300
60.04.025	DN25 T Clamp	200	0,0368





► **Trunking and Accesories for Flexible Hoses - Cream**

PRODUCT CODE	SIZE	PCS/BOX	Pcs/Net Kgs
63.03.001	Hose Trunking 3 m.	9	1,55
63.01.003	L-Korner	50	0,031
63.01.004	Outer Corner	50	0,039
63.01.005	Inner Corner	50	0,035
63.01.006	Wall Pass-through Lid (closed)	50	0,019
63.01.007	Wall Pass-through Lid (open)	50	0,016



► **Trunking and Accesories for Flexible Hoses - White**

PRODUCT CODE	SIZE	PCS/BOX	Pcs/Net Kgs
63.04.001	Hose Trunking 3 m.	9	1,55
63.02.003	L-Corner	50	0,031
63.02.004	Outer Corner	50	0,039
63.02.005	Inner Corner	50	0,035
63.02.006	Wall Pass-through Lid (closed)	50	0,019
63.02.007	Wall Pass-through Lid (open)	50	0,016
63.02.008	Joint Bellow 1 mt.	50	0,220



► **Metal-Metal Quick Coupling Union with Purging Valve**

PRODUCT CODE	SIZE	PCS/BOX	Pcs/Net Kgs
60.25.116	DN25 X 3/4" Threaded Selenoid Joint	-	0,250
60.25.117	DN25 X 1" Threaded Selenoid Joint	16	0,420
60.25.118	DN25 X 1" Interior Threaded	16	0,350
60.25.125	DN25 X 1" With Union	25	0,570

► **Mounting Tools**



PRODUCT CODE	SIZE	PCS/BOX	Pcs/Net Kgs
49.51.001		1	0,520
63.01.009		1	0,840
94.00.003		1	0,75

# PPR Pipe and Fittings



## ► **KAS Quality at Heating and Drinking Water installations**



- The safety and quality of the KAS is now in PPRC heating and drinking water installations. KAS is next to both the user and the practitioner.

KAS, manufacturing all PPRC Pipe, PPR Composite Pipe, PPR Pipe With Foil and PPRC fittings from 20 mm to 110 mm, provides a lot of benefits not only to the user but also to the practitioner.

KAS PPRC products are produced with a slippery and glossy inner surface. In this way, the color and taste of the water does not change. KAS PPRC products, which reduce the waste to zero, also provide high welding performance since there is no shrinkage at the welding point.

## ► PPRC PIPE AND FITTINGS



### ► Pex-B Pipe

PRODUCT CODE	SIZE	PCS/BOX	Pcs/Net Kgs
80.00.016	16x2	200	0,121
80.01.016	16x2	100 <span style="color:blue">■</span>	0,117
80.02.016	16x2	100 <span style="color:red">■</span>	0,117
81.00.016	O <sub>2</sub> Barrier	160	0,090
81.01.016	O <sub>2</sub> Barrier	100 <span style="color:blue">■</span>	0,125
81.02.016	O <sub>2</sub> Barrier	100 <span style="color:red">■</span>	0,125

### ► Pe-Rt Pipe

PRODUCT CODE	SIZE	PCS/BOX	Pcs/Net Kgs
80.20.016	16x2	200	0,090
80.21.016	16x2	100 <span style="color:blue">■</span>	0,123
80.22.016	16x2	100 <span style="color:red">■</span>	0,123
80.10.016	O <sub>2</sub> Barrier	160	0,093
80.11.016	O <sub>2</sub> Barrier	100 <span style="color:blue">■</span>	0,126
80.12.016	O <sub>2</sub> Barrier	100 <span style="color:red">■</span>	0,126

### ► PPR Pipe PN 10

PRODUCT CODE	SIZE	PCS/BOX	Pcs/Net Kgs
94.01.020	20	100	0,115
94.01.025	25	80	0,170
94.01.032	32	60	0,265
94.01.040	40	40	0,399
94.01.050	50	20	0,634
94.01.063	63	16	1,141
94.01.075	75	12	1,450
94.01.090	90	8	2,050
94.01.110	110	4	3,040

### ► PPR Pipe - PN 16

PRODUCT CODE	SIZE	PCS/BOX	Pcs/Net Kgs
94.02.020	20	100	0,150
94.02.025	25	80	0,225
94.02.032	32	60	0,370
94.02.040	40	40	0,560
94.02.050	50	20	0,919
94.02.063	63	16	1,363
94.02.075	75	12	2,050
94.02.090	90	8	2,930
94.02.110	110	4	4,390

### ► PPR Pipe - PN 20

PRODUCT CODE	SIZE	PCS/BOX	Pcs/Net Kgs
94.03.020	20	100	0,166
94.03.025	25	80	0,257
94.03.032	32	60	0,429
94.03.040	40	40	0,671
94.03.050	50	20	1,035
94.03.063	63	16	1,616
94.03.075	75	12	2,350
94.03.090	90	8	3,300
94.03.110	110	4	5,050

Green Colour Code : 95 / Gray Colour Code : 96  
 Capuccino Colour Code : 97 / Blue Colour Code : 98

## ► PPR PIPE AND FITTINGS



### ► PPR Pipe with Aluminium, Standart PN 25

PRODUCT CODE	SIZE	PCS/BOX	Pcs/Net Kgs
94.11.020	20	100	0,189
94.11.025	25	80	0,285
94.11.032	32	60	0,463
94.11.040	40	40	0,716
94.11.050	50	20	1,056
94.11.063	63	16	1,731



### ► PPR Pipe With Aluminum, UV Cover

PRODUCT CODE	SIZE	PCS/BOX	Pcs/Net Kgs
94.11.020	20	100	0,189
94.11.025	25	80	0,285
94.11.032	32	60	0,463
94.11.040	40	40	0,716
94.11.050	50	20	1,056
94.11.063	63	16	1,731



### ► PPR Composite Pipe - PN 20

PRODUCT CODE	SIZE	PCS/BOX	Pcs/Net Kgs
94.06.020	20	100	0,163
94.06.025	25	80	0,267
94.06.032	32	60	0,428
94.06.040	40	40	0,606
94.06.050	50	20	0,999
94.06.063	63	16	1,515
94.06.075	75	12	2,120
94.06.090	90	8	3,120
94.06.110	110	4	4,430



### ► PPR Composite Pipe - PN 25

PRODUCT CODE	SIZE	PCS/BOX	Pcs/Net Kgs
94.07.020	20	100	0,182
94.07.025	25	80	0,281
94.07.032	32	60	0,463
94.07.040	40	40	0,681
94.07.050	50	20	1,090
94.07.063	63	16	1,696
94.07.075	75	12	2,480
94.07.090	90	8	3,330
94.07.110	110	4	5,075

Green Colour Code : 95 / Gray Colour Code : 96  
Capuccino Colour Code : 97 / Blue Colour Code : 98

## ► PPRC PIPE AND FITTINGS

### ► Elbow 90°



PRODUCT CODE	SIZE	PCS/BOX	Pcs/Net Kgs
94.13.020	20	400	0,016
94.13.025	25	200	0,025
94.13.032	32	125	0,045
94.13.040	40	60	0,070
94.13.050	50	30	0,143
94.13.063	63	18	0,210
94.13.075	75	12	0,384
94.13.090	90	5	0,679
94.13.110	110	3	1,087

### ► Elbow 45°



PRODUCT CODE	SIZE	PCS/BOX	Pcs/Net Kgs
94.14.020	20	400	0,014
94.14.025	25	300	0,019
94.14.032	32	150	0,037
94.14.040	40	80	0,053
94.14.050	50	48	0,101
94.14.063	63	21	0,190
94.14.075	75	12	0,295
94.14.090	90	10	0,507
94.14.110	110	4	0,898

### ► Tail Elbow 90°



PRODUCT CODE	SIZE	PCS/BOX	Pcs/Net Kgs
94.13.220	20	300	0,018
94.13.225	25	150	0,030
94.13.232	32	90	0,051

### ► Socket



PRODUCT CODE	SIZE	PCS/BOX	Pcs/Net Kgs
94.17.020	20	600	0,011
94.17.025	25	300	0,016
94.17.032	32	200	0,026
94.17.040	40	100	0,043
94.17.050	50	80	0,089
94.17.063	63	36	0,138
94.17.075	75	24	0,194
94.17.090	90	12	0,378
94.17.110	110	4	0,536

Green Colour Code : 95 / Gray Colour Code : 96  
 Capuccino Colour Code : 97 / Blue Colour Code : 98

## ► PPRC PIPE AND FITTINGS

### ► Equal Tee



PRODUCT CODE	SIZE	PCS/BOX	Pcs/Net Kgs
94.15.020	20	240	0,021
94.15.025	25	150	0,032
94.15.032	32	75	0,052
94.15.040	40	50	0,088
94.15.050	50	30	0,159
94.15.063	63	16	0,292
94.15.075	75	12	0,467
94.15.090	90	6	0,832
94.15.110	110	4	1,410

### ► Reduction



PRODUCT CODE	SIZE	PCS/BOX	Pcs/Net Kgs
94.19.001	25x20	600	0,010
94.19.002	32x20	300	0,014
94.19.003	32x25	300	0,016
94.19.004	40x20	250	0,023
94.19.005	40x25	200	0,025
94.19.006	40x32	160	0,033
94.19.007	50x20	140	0,043
94.19.008	50x25	140	0,043
94.19.009	50x32	125	0,046
94.19.010	50x40	100	0,052
94.19.011	63x20	80	0,068
94.19.012	63x25	80	0,071
94.19.013	63x32	64	0,075
94.19.014	63x40	64	0,082
94.19.015	63x50	52	0,095
94.19.016	75x50	30	0,131
94.19.017	75x63	30	0,169
94.19.018	90x40	40	0,177
94.19.019	90x50	40	0,196
94.19.020	90x63	20	0,224
94.19.021	90x75	20	0,254
94.19.022	110x50	20	0,295
94.19.023	110x63	16	0,298
94.19.024	110x75	16	0,434
94.19.025	110x90	12	0,0521

Green Colour Code : 95 / Gray Colour Code : 96  
Capuccino Colour Code : 97 / Blue Colour Code : 98

## ► PPRC PIPE AND FITTINGS

### ► *Reduction T*



PRODUCT CODE	SIZE	PCS/BOX	Pcs/Net Kgs
94.16.001	25x20x20	200	0,027
94.16.002	25x20x25	150	0,028
94.16.003	32x20x20	90	0,037
94.16.004	32x20x32	80	0,041
94.16.005	32x25x20	100	0,041
94.16.006	32x25x25	90	0,042
94.16.007	32x25x32	80	0,045
94.16.008	40x20x40	60	0,064
94.16.009	40x25x40	60	0,068
94.16.010	40x32x40	50	0,080
94.16.011	50x20x50	32	0,125
94.16.012	50x25x50	32	0,125
94.16.013	50x32x50	32	0,127
94.16.014	50x40x50	32	0,130
94.16.015	63x20x63	18	0,244
94.16.016	63x25x63	18	0,250
94.16.017	63x32x63	18	0,244
94.16.018	63x40x63	18	0,244
94.16.019	63x50x63	18	0,248
94.16.020	75x20x75	12	0,440
94.16.021	75x25x75	12	0,440
94.16.022	75x32x75	12	0,439
94.16.023	75x40x75	12	0,439
94.16.024	75x50x75	12	0,439
94.16.025	75x63x75	12	0,454
94.16.026	90x20x90	6	0,725
94.16.027	90x25x90	6	0,722
94.16.028	90x32x90	6	0,720
94.16.029	90x40x90	6	0,717
94.16.030	90x50x90	6	0,714
94.16.031	90x63x90	6	0,720
94.16.032	90x75x90	6	0,721
94.16.033	110x20x110	3	1,271
94.16.034	110x25x110	3	1,269
94.16.035	110x32x110	3	1,229
94.16.036	110x40x110	3	1,227
94.16.037	110x50x110	3	1,225
94.16.038	110x63x110	3	1,218
94.16.039	110x75x110	3	1,222
94.16.040	110x90x110	3	1,241

Green Colour Code : 95 / Gray Colour Code : 96  
 Capuccino Colour Code : 97 / Blue Colour Code : 98



## ► PPRC PIPE AND FITTINGS

### ► Cross



PRODUCT CODE	SIZE	PCS/BOX	Pcs/Net Kgs
94.12.020	20	120	0,030
94.12.025	25	120	0,042
94.12.032	32	60	0,081
94.12.040	40	0	0,250

### ► Crossover Socket Type



PRODUCT CODE	SIZE	PCS/BOX	Pcs/Net Kgs
94.12.120	20	60	0,047
94.12.125	25	60	0,067
94.12.132	32	40	0,135

### ► C Cross



PRODUCT CODE	SIZE	PCS/BOX	Pcs/Net Kgs
94.12.220	20	120	0,029
94.12.225	25	120	0,049
94.12.232	32	60	0,093



### ► PPR Stop Valve

PRODUCT CODE	SIZE	PCS/BOX	Pcs/Net Kgs
94.33.676	1/2"	40	0,168
94.33.677	3/4"	30	0,191
94.33.678	1"	30	0,260

Green Colour Code : 95 / Gray Colour Code : 96  
Capuccino Colour Code : 97 / Blue Colour Code : 98

## ► PPRC PIPE AND FITTINGS



### ► Cross PPRC Pipe

PRODUCT CODE	SIZE	PCS/BOX	Pcs/Net Kgs
94.31.020	20 mm	200	0,022
94.31.025	25 mm	140	0,033
94.31.032	32 mm	60	0,054
94.31.040	40 mm	40	0,087



### ► Double Clamp

PRODUCT CODE	SIZE	PCS/BOX	Pcs/Net Kgs
94.20.220	20 mm	400	0,011
94.20.225	25 mm	300	0,011
94.20.232	32 mm	200	0,017



### ► Single Clamp

PRODUCT CODE	SIZE	PCS/BOX	Pcs/Net Kgs
94.20.020	20	900	0,005
94.20.025	25	900	0,006
94.20.032	32	600	0,010
94.20.040	40	400	0,017
<b>Single Locked</b>			
94.20.120	20	600	0,006
94.20.125	25	600	0,008
94.20.132	32	300	0,010



### ► Protection Cap

PRODUCT CODE	SIZE	PCS/BOX	Pcs/Net Kgs
94.18.020	20	800	0,008
94.18.025	25	500	0,010
94.18.032	32	300	0,019
94.18.040	40	200	0,032
94.18.050	50	100	0,060
94.18.063	63	60	0,111
94.18.075	75	40	0,146
94.18.090	90	24	0,264
94.18.110	110	12	0,514

Green Colour Code : 95 / Gray Colour Code : 96  
 Capuccino Colour Code : 97 / Blue Colour Code : 98

## ► PPRC PIPE AND FITTINGS



### ► Blind Cap

PRODUCT CODE	SIZE	PCS/BOX	Pcs/Net Kgs
94.21.001	20	900	0,006
94.21.002	25	600	0,011
94.21.011	20 long	600	0,008
94.21.003	32	400	0,010



### ► Blind Cap - Long Type

PRODUCT CODE	SIZE	PCS/BOX	Pcs/Net Kgs
94.21.021	20	400	0,020



### ► Female Transition

PRODUCT CODE	SIZE	PCS/BOX	Pcs/Net Kgs
94.22.001	20x1/2"	150	0,039
94.22.002	20x3/4"	80	0,071
94.22.003	25x1/2"	80	0,043
94.22.004	25x3/4"	80	0,062
94.22.005	32x1/2"	50	0,080
94.22.006	32x3/4"	50	0,085
94.22.007	32x1"	50	0,090
94.22.008	40x1/4"	24	0,316
94.22.009	50x1/2"	18	0,432
94.22.010	63x2"	12	0,421
94.22.011	75x2"	8	0,790
94.22.012	90x3"	6	1,240
94.22.013	110x4"	4	1,740



### ► Male Transition

PRODUCT CODE	SIZE	PCS/BOX	Pcs/Net Kgs
94.23.001	20x1/2"	125	0,051
94.23.002	20x3/4"	80	0,078
94.23.003	25x1/2"	80	0,053
94.23.004	25x3/4"	80	0,084
94.23.005	32x1/2"	50	0,094
94.23.006	32x3/4"	50	0,095
94.23.007	32x1"	50	0,108
94.23.008	40x1/4"	21	0,286
94.23.009	50x1/2"	21	0,486
94.23.010	63x2"	12	0,654
94.23.011	75x2"	8	0,890
94.23.012	90x3"	6	1,370
94.23.013	110x4"	3	2,190

Green Colour Code : 95 / Gray Colour Code : 96  
Capuccino Colour Code : 97 / Blue Colour Code : 98

## ► PPRC PIPE AND FITTINGS



### ► Male Elbow

PRODUCT CODE	SIZE	PCS/BOX	Pcs/Net Kgs
94.25.001	20x1/2"	80	0,058
94.25.002	20x3/4"	60	0,072
94.25.003	25x1/2"	60	0,074
94.25.004	25x3/4"	60	0,084
94.25.006	32x3/4"	30	0,124
94.25.007	32x1"	30	0,141



### ► Female Elbow

PRODUCT CODE	SIZE	PCS/BOX	Pcs/Net Kgs
94.24.001	20x1/2"	120	0,046
94.24.002	20x3/4"	100	0,063
94.24.003	25x1/2"	60	0,063
94.24.004	25x3/4"	60	0,076
94.24.006	32x3/4"	30	0,115
94.24.007	32x1"	30	0,116



### ► Male Elbow Wall Type

PRODUCT CODE	SIZE	PCS/BOX	Pcs/Net Kgs
94.29.001	20x1/2"	75	0,064
94.29.002	25x1/2"	60	0,076
94.29.003	25x3/4"	60	0,068



### ► Female Elbow Wall Type

PRODUCT CODE	SIZE	PCS/BOX	Pcs/Net Kgs
94.28.001	20x1/2"	75	0,052
94.28.002	25x1/2"	60	0,062



### ► Male T

PRODUCT CODE	SIZE	PCS/BOX	Pcs/Net Kgs
94.27.001	20 x 1/2"	80	0,066
94.27.002	20 x 3/4"	75	0,076
94.27.003	25 x 1/2"	50	0,092
94.27.004	25 x 3/4"	50	0,090
94.27.006	32 x 3/4"	30	0,134
94.27.007	32 x 1"	30	0,148

Green Colour Code : 95 / Gray Colour Code : 96  
 Capuccino Colour Code : 97 / Blue Colour Code : 98

## ► PPRC PIPE AND FITTINGS

### ► Female T



PRODUCT CODE	SIZE	PCS/BOX	Pcs/Net Kgs
94.26.001	20x1/2"	80	0,050
94.26.002	20x3/4"	75	0,067
94.26.003	25x1/2"	50	0,075
94.26.004	25x3/4"	50	0,083
94.26.006	32x3/4"	30	0,126
94.26.007	32x1"	30	0,128

### ► Combi Connection Parts



PRODUCT CODE	SIZE	PCS/BOX	Pcs/Net Kgs
94.37.440	8 Unit Straight	20	0,703
94.37.441	8 Unit Angle	20	0,738
94.37.442	10 Unit Straight	12	0,968
94.37.443	10 Unit Angle	12	1,000

### ► PPR Ball Valve



PRODUCT CODE	SIZE	PCS/BOX	Pcs/Net Kgs
94.33.670	1/2"	50	0,102
94.33.671	3/4"	50	0,124
94.33.672	1"	40	0,180
94.33.673	1 1/4"	10	0,504
94.33.674	1 1/2"	6	0,543
94.33.675	2"	4	0,880

### ► Mini PPR Valve



PRODUCT CODE	SIZE	PCS/BOX	Pcs/Net Kgs
94.33.800	1/2"	50	0,086
94.33.801	3/4"	40	0,134

### ► Water Ball Valve With PPR Connection



PRODUCT CODE	SIZE	PCS/BOX	Pcs/Net Kgs
08.09.730	20 mm		
08.09.731	25 mm	40	0,364
08.09.732	32 mm		

Green Colour Code : 95 / Gray Colour Code : 96  
Capuccino Colour Code : 97 / Blue Colour Code : 98

## ► PPRC PIPE AND FITTINGS



### ► PPR Filter

PRODUCT CODE	SIZE	PCS/BOX	Pcs/Net Kgs
94.33.680	1/2"	50	0,086
94.33.681	3/4"	40	0,134
94.33.682	1"	35	0,201



### ► Nipple With Loose Nut

PRODUCT CODE	SIZE	PCS/BOX	Pcs/Net Kgs
94.30.001	20x1/2"	200	0,049
94.30.002	25x3/4"	150	0,065
94.30.005	25x1/2"	150	0,050
94.30.007	32x1"	80	0,065



### ► PPR Check Valve

PRODUCT CODE	SIZE	PCS/BOX	Pcs/Net Kgs
94.33.695	1/2"	100	0,152
94.33.696	3/4"	60	0,207



### ► PPRC Radiator Valve

PRODUCT CODE	SIZE	PCS/BOX	Pcs/Net Kgs
94.33.700	1/2"	100	0,152
94.33.701	3/4"	60	0,207



### ► PPRC Radiator Valve

PRODUCT CODE	SIZE	PCS/BOX	Pcs/Net Kgs
94.33.702	1/2"	100	0,171
94.33.703	3/4"	60	0,223



### ► Elbow Nipple With Loose Nut

PRODUCT CODE	SIZE	PCS/BOX	Pcs/Net Kgs
94.30.003	20x1/2"	200	0,054
94.30.004	25x3/4"	150	0,080

Green Colour Code : 95 / Gray Colour Code : 96  
 Capuccino Colour Code : 97 / Blue Colour Code : 98

## ► PPRC PIPE AND FITTINGS



### ► Battery Connection (Fixed)

PRODUCT CODE	SIZE	PCS/BOX	Pcs/Net Kgs
94.28.004	20 x 1/2"	50	0,129
94.28.005	25 x 1/2"	40	0,126



### ► Battery Connection (Fixed) - Short

PRODUCT CODE	SIZE	PCS/BOX	Pcs/Net Kgs
94.28.007	20 x 1/2"		
94.28.008	25 x 3/4"		
94.28.009	25 x 1/2"		
94.28.010	25 x 3/4"		
94.29.007	20 x 1/2"		
94.29.008	20 x 3/4"		
94.29.009	25 x 1/2"		
94.29.010	25 x 3/4"		



### ► Battery Connection

PRODUCT CODE	SIZE	PCS/BOX	Pcs/Net Kgs
94.28.006	20 x 1/2"	50	0,116



### ► Battery Connection (Adjustable)

PRODUCT CODE	SIZE	PCS/BOX	Pcs/Net Kgs
94.28.012	20 x 1/2"	27	0,231
94.28.013	25 x 1/2"	27	0,216



### ► Female Transition Union

PRODUCT CODE	SIZE	PCS/BOX	Pcs/Net Kgs
80.21.730	1/2"	100	0,075
80.21.731	3/4"	75	0,115
80.21.732	1"	50	0,130
80.21.733	1 1/4"	25	0,256
80.21.734	1 1/2"	15	0,456
80.21.735	2"	10	0,856



### ► PPR Union

PRODUCT CODE	SIZE	PCS/BOX	Pcs/Net Kgs
94.35.020	20		
94.35.025	25		
94.35.032	32		
94.35.040	40		

Green Colour Code : 95 / Gray Colour Code : 96  
Capuccino Colour Code : 97 / Blue Colour Code : 98

## ► PPRC PIPE AND FITTINGS

### ► Male Transition Union



PRODUCT CODE	SIZE	PCS/BOX	Pcs/Net Kgs
80.21.750	1/2"	100	0,084
80.21.751	3/4"	75	0,120
80.21.752	1"	50	0,168
80.21.753	1 1/4"	25	0,316
80.21.754	1 1/2"	15	0,486
80.21.755	2"	10	0,490

### ► PPR Adapter



PRODUCT CODE	SIZE	PCS/BOX	Pcs/Net Kgs
80.21.770	1/2"	100	0,101
80.21.771	3/4"	75	0,127
80.21.772	1"	50	0,157
80.21.773	1 1/4"	25	0,328
80.21.774	1 1/2"	15	0,400
80.21.775	2"	10	0,645

### ► Male Transition Union



PRODUCT CODE	SIZE	PCS/BOX	Pcs/Net Kgs
80.21.760	20x3/4"	100	0,125
80.21.761	20x1"	100	0,168
80.21.762	25x1/2"	100	0,161
80.21.763	25x1"	75	0,174
80.21.764	32x1/2"	50	0,000
80.21.765	32x3/4"	50	0,168

### ► Female Transition Union



PRODUCT CODE	SIZE	PCS/BOX	Pcs/Net Kgs
80.21.740	20x3/4"	100	0,075
80.21.741	20x1"	100	0,168
80.21.742	25x1/2"	100	0,110
80.21.743	25x1"	75	0,115
80.21.744	32x1/2"	50	0,150
80.21.745	32x3/4"	50	0,173

Green Colour Code : 95 / Gray Colour Code : 96  
 Capuccino Colour Code : 97 / Blue Colour Code : 98



## ► PPRC PIPE AND FITTINGS



### ► Concealed Valve

PRODUCT CODE	SIZE	PCS/BOX	Pcs/Net Kgs
92.11.312	1/2"	32	0,301
92.11.314	3/4"	32	0,375



### ► Concealed Valve

PRODUCT CODE	SIZE	PCS/BOX	Pcs/Net Kgs
92.11.316	1/2"	32	0,319
92.11.318	3/4"	32	0,340



### ► Concealed Valve

PRODUCT CODE	SIZE	PCS/BOX	Pcs/Net Kgs
92.11.320	1/2"	32	0,465
92.11.322	3/4"	32	0,494



### ► PPR Pipe Cutter and Welding Set

PRODUCT CODE	SIZE	PCS/BOX	Pcs/Net Kgs
94.00.001	Welding Set	1	4,900
94.00.002	Pipe Cutter	20	0,350

Green Colour Code : 95 / Gray Colour Code : 96  
 Capuccino Colour Code : 97 / Blue Colour Code : 98







AENOR



bsi.

[kas.com.tr](http://kas.com.tr)

[f](#) [t](#) [i](#) /kasgrup

**KAS**

"Global quality for professionals"

Kaspa Dış Tic. A.Ş. Necip Fazıl Mah. Alemdağ Cad.  
Sağdıç Sok. No:4 Ümraniye / İSTANBUL - TURKEY  
Tel: +90 216 527 1 527 pbx Fax: +90 216 499 74 76